

Global CDMO For IVD Instruments



Venus 100

Fully automated chemiluminescence immunoassay analyzer

Registration Certificate No: 渝械注准 20222220226、20222220227



Small and exquisite
breaks through the limitation of space

fully automated | consistently smart | highly
customizable | super cost-effective

C O N T E N T S

V e n u s 1 0 0

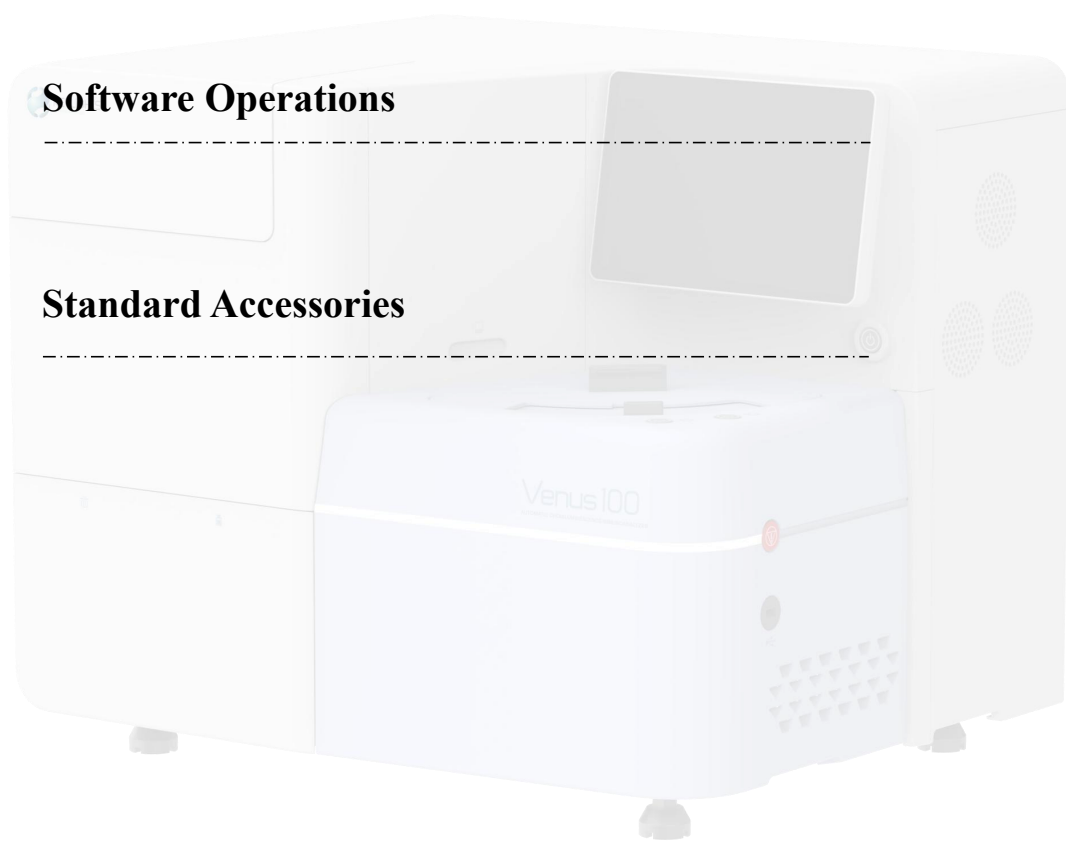
Instrument Specifications

Functional Modules

Instrument Parameters

Software Operations

Standard Accessories



Venus 100 Series Small-sized Fully Automated Chemiluminescence Immunoassay Analyzer

Venus 100 Fully Automated Chemiluminescence

Immunoassay Analyzer——150T/H

which makes use of an open magnetic particle-based chemiluminescence detection platform, compatible with various reagents. It is compact yet comprehensive, fully automated, highly intelligent, flexible and precise, meeting the diverse application scenarios of research centers, testing laboratories, and clinical departments

Reaction vessels
200

Reagent positions
15

Sample positions
40

Automated

Automated RV alignment, reagent barcode reading, sample barcode reading, maintenance before shut down, sample pipetting

Stable

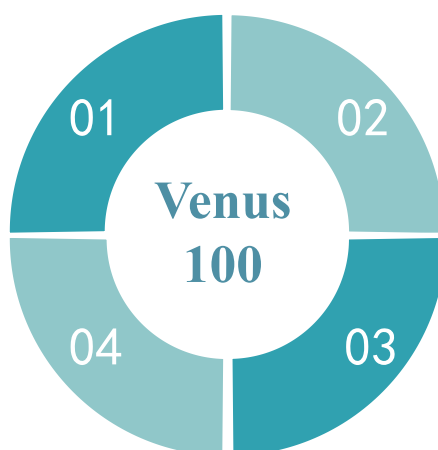
Friendly visual interface, intelligent algorithm, any-time STAT assay, real-time monitoring of instrument states, automatic failure recovery

Customizable

Customizable assay process, structure, software functions, which meet various assay process demands

Reliable

Low failure rate, precise diameter-variable pipettor, improved dispensing accuracy, high-pressure flush of the internal and external of the pipettor to reduce carryover



Instrument Specifications

Small and exquisite, breaks through the limitation of space

Designed to be placed on the workbench, flexible and convenient for operations, suitable for application scenarios like clinical departments

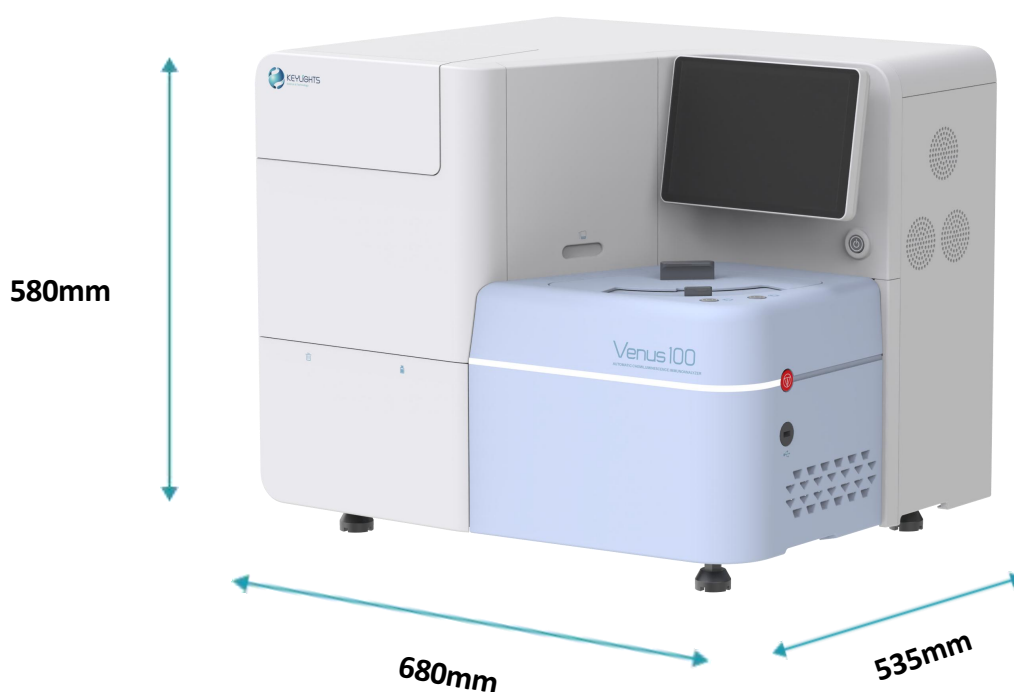
Comprehensive functions, user friendly

Supports STAT assays, automatic sample dilution, RV replenishment without an interruption in system operation

high reliability|high-precision|high throughput

Floor efficiency ratio: 329.8T/m³

Dimensions : 680mm**535mm*580mm

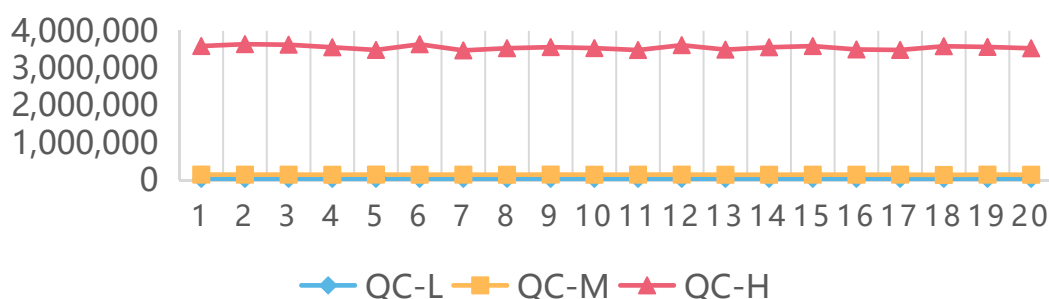


Instrument Specifications

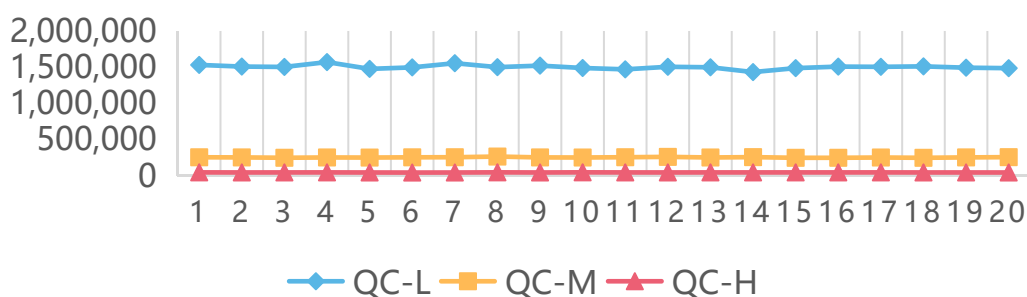
High precision: multiple assays, CV<3%

Assay	HBsAg			T4		
Sample	QC-L	QC-M	QC-H	QC-L	QC-M	QC-H
1	32,160	146,150	3,592,118	1,531,684	257,389	48,964
2	31,931	145,023	3,642,447	1,508,973	255,466	47,926
3	33,051	144,624	3,627,949	1,503,933	250,606	48,187
4	31,983	142,050	3,558,359	1,570,790	254,819	48,718
5	32,274	146,178	3,487,209	1,476,947	253,433	47,468
...						
16	33,341	143,268	3,500,383	1,508,425	250,366	48,434
17	32,831	145,198	3,487,557	1,505,427	254,198	48,665
18	33,133	136,377	3,587,014	1,511,734	250,122	47,856
19	33,043	145,869	3,568,147	1,493,548	255,641	47,881
20	31,949	142,385	3,531,768	1,486,852	259,053	47,285
CV	1.54%	1.65%	1.53%	1.94%	1.69%	1.54%

HBsAg



T4

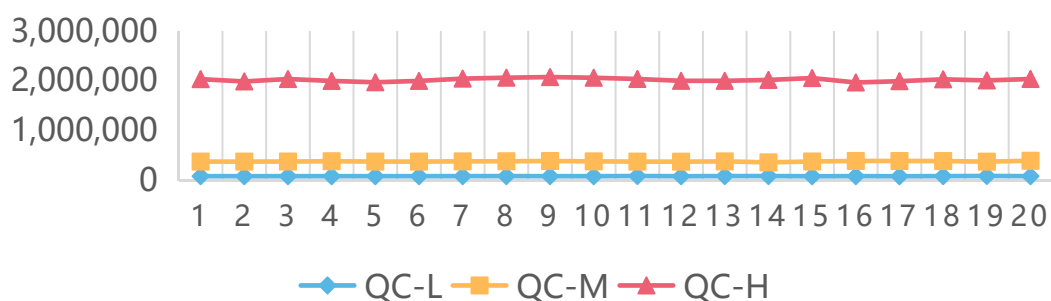


Instrument Specifications

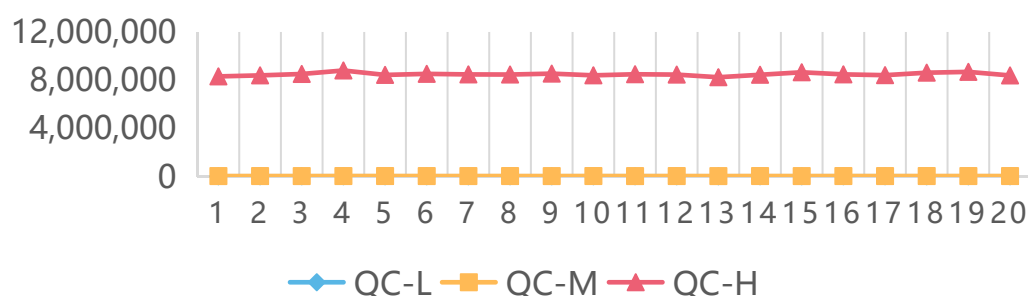
Different reagents for the same assay: CV<3%

Assay	dsDNA - reagent 1			dsDNA - reagent 2		
Sample	QC-L	QC-M	QC-H	QC-L	QC-M	QC-H
1	78,351	372,030	1,983,993	53,185	72,708	8,406,655
2	78,790	374,021	2,032,160	52,628	71,126	8,522,600
3	78,470	378,953	1,994,097	54,288	72,798	8,812,575
4	78,979	372,719	1,966,827	52,025	74,479	8,445,295
5	79,077	372,603	2,029,750	51,403	71,397	8,322,205
...						
16	79,696	385,129	1,962,965	54,627	73,026	8,489,465
17	77,532	384,295	1,988,758	54,853	71,857	8,424,860
18	79,912	382,961	2,026,092	51,269	73,507	8,629,820
19	83,200	371,289	2,004,278	53,426	72,774	8,697,515
20	79,101	389,379	2,033,112	52,085	72,861	8,401,325
CV	1.96%	1.87%	1.55%	1.92%	1.72%	1.52%

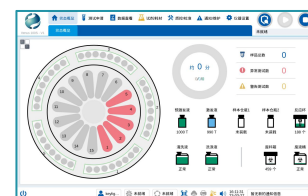
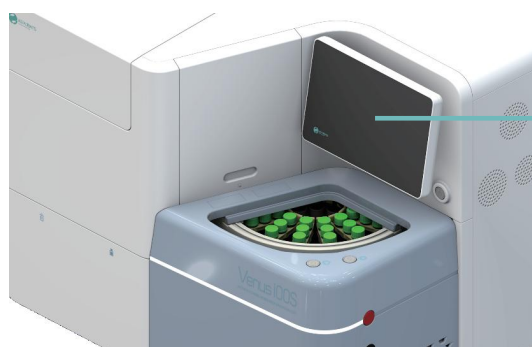
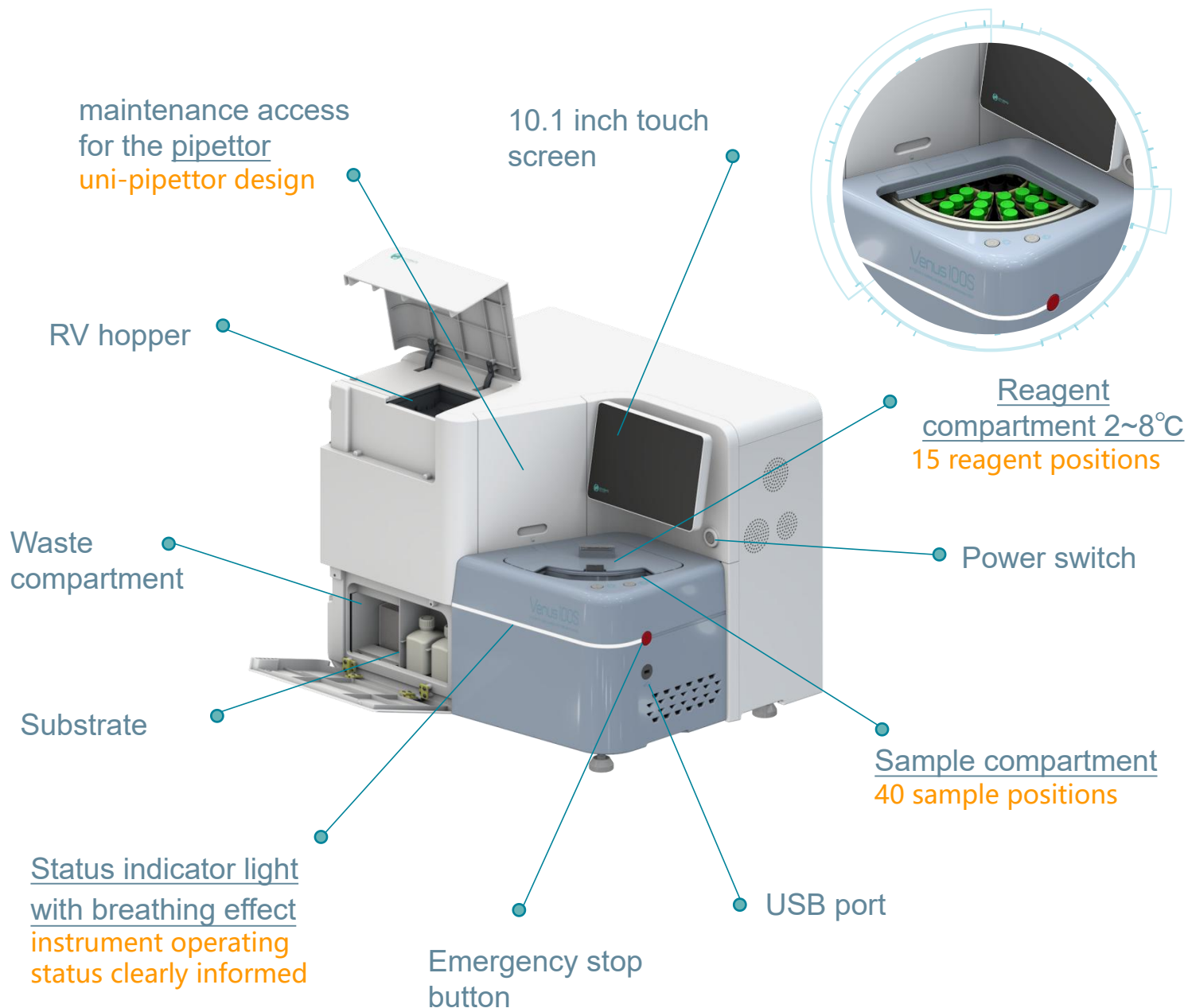
dsDNA - REAGENT 1



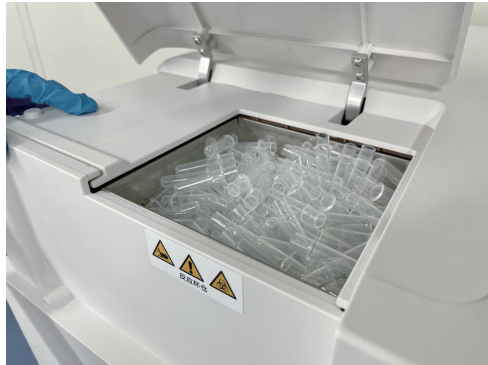
dsDNA - REAGENT 2



Functional Modules



Functional Modules



**Automatic RV alignment
replenishment of 200 at maximum
without an interruption in system
operation**

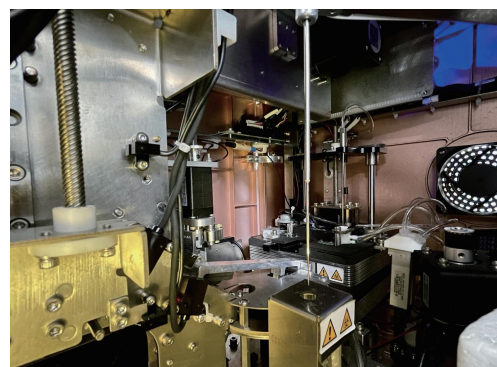
**Stable operation, low failure rate
stable CV%, high accuracy**



**15 reagent positions, supports 4-
component reagents, with
refrigeration function, customization
available**



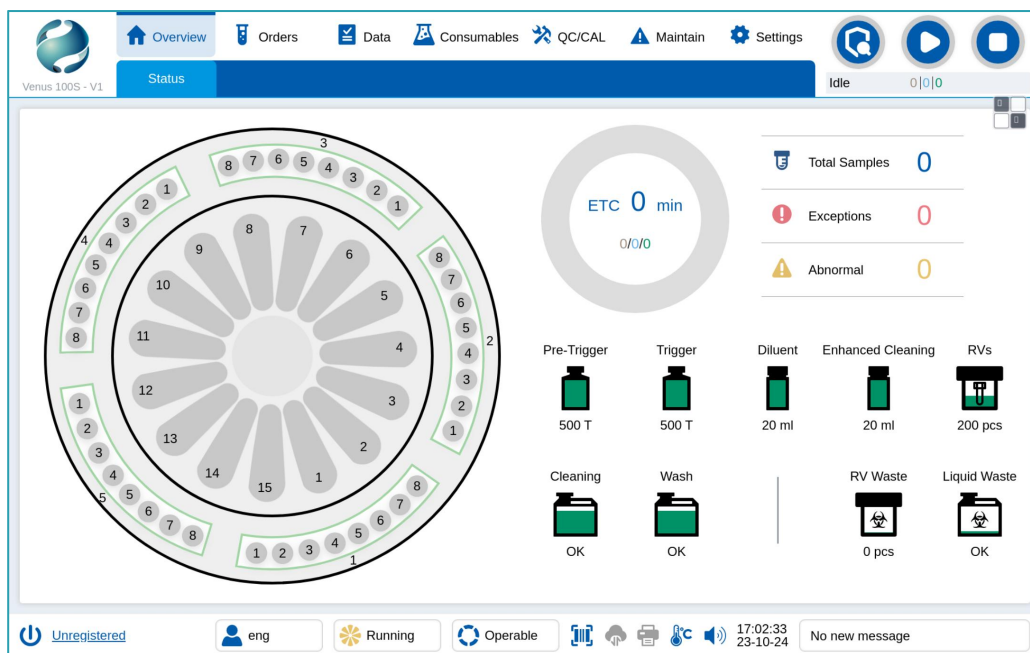
**Effective pipettor cleaning and
accurate reagent aspiration**



Instrument Parameters

Series	Venus 100
Detection Principle	Open platform, supporting magnetic particle AE/AP/HRP detection principles
Throughput	150T/H
Sample Positions	40 sample positions, supports automatic dilutiion
Reagent Positions	15 reagent positions, supports 4- component reagents, with refrigeration function, customization available
Reaction Vessels	Automatic alignment, replenishment of 200 at maximum without an interruption in system operation
Walk-away Time	>2h
Precision	CV≤3%
Carryover	< 1ppm
Smart System	Supports automatic barcode reading Liquid level detection, anti-collision, clots detection aspiration failure alert for pipettor probe Supports interior and exterior cleaning of pipettor probe with purified water, cleaning solution or enhanced cleaning solution Arranges RVs automatically. Supports RV replenishment without an interruption in system operation
LIS Server	Unidirectional, Bidirectional
Operation Screen	15.6-inch touch screen. User friendly. Suitable for all kinds of application scenarios
Dimensions	680*535*580 (mm)

Software Operations



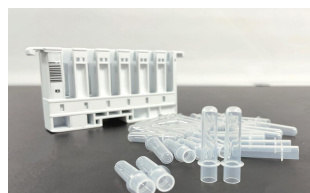
Overview

user friendly/real-time monitoring of assay tests/real-time monitoring of reagents and consumables/smart alert/ multi-language support

Standard Accessories



Reagent racks



Reaction vessels



Suottles



Sample racks

Tumor Marker

CYFRA21-1
NSE
AFP
CEA
CA125
SCCA
CA15-3
CA19-9
CA72-4
HE4
PIVKA II
ProGRP
CA50
CA242
LN
PAP
HER-2

Cardiac Marker

hs-cTnI
NT-proBNP
BNP
CK-MB
MYO
LP-PLA2
H-FABP
cTnI
CRP
HCY

Bone Metabolism

PTH
CT
25-OH VD
 β -CTx
total P1NP

Hepatic fibrosis

CG

Neurological

S100

Tang screening

PAPP-A

Glyco Metabolism

C-P
INS
Anti-IA2 IgG
GAD Ab
IAA

Anemia

VB12
FA
Ferr
EPO

Inflammation

Monitoring

PCT
SAA
IL-6
TNF- α

Fertility

FSH
E2
AMH
PROG
 β -HCG
TESTO
LH
PRL
SHBG
17 α -OHP
DHEA-S
Free Testo
FE3
Androstenedione

Kidney Marker

Cortisol
 β 2-MG
H-ALB

Growth hormone

IGF- I
IGFBP-3

Endocrine hormone

GH
ACTH

Stomach Marker

PG I
PG II
G17
H.pylori IgG

Coagulation

D-Dimer
FDP
PIC
TAT
TM
tPAI.C

Infectious Diseases

Anti-TP
HIV Ag/Ab*
HCV Ab*
TP Ab*
HBSAg*
HBsAb*
HBeAg*
HBeAb*
HBcAb*

Drug monitoring

CSA
FK506
Digoxin

Liver Marker

PIIINP
CIV
HA

Thyroid

FT4
FT3
TSH
TT3
TT4
TG
TGAb
TPOAb
rT3
T3
T-Uptake

Autoimmunity

Anti-Sm IgG
Anti-Jo-1 IgG
Anti-SS-B IgG
Anti-SS-A/Ro IgG
Anti-M2 IgG
Anti-Rib P IgG
Anti-Scl-70 IgG
Anti- β 2-GP1 IgG
Sm/RNP、Sm、SS-A/Ro、
SS-B、Jo-1、Scl-70
Anti-MPO IgG
ACA IgG
Anti-Histones IgG
aCL IgM
Anti-dsDNA IgG
ANA
Anti-CCP

EB virus

EBV VCA IgM
EBV EA IgA
EBV NA IgG

Hypertension

Renin
ALD
A II
A I

Respiratory tract infection

(2019—nCoV) IgG
MP IgM

Immunoglobulin

IgG
IgM
IgE

Eugenics and nurturing

HSV-2 IgM
HSV-1/2 IgM