

Global CDMO For IVD Instruments



# Venus 9000

Fully Automated Chemiluminescence Immunoassay Analyzer

Registration Certificate No: 渝械注准20232220334



Navigate with Light | Lead a New Voyage

high stability | full automation | deep intelligence | broad scalability

# C O N T E N T S

V e n u s 9 0 0 0

## **Instrument Specifications**

---

## **Functional Modules**

---

## **Instrument Parameters**

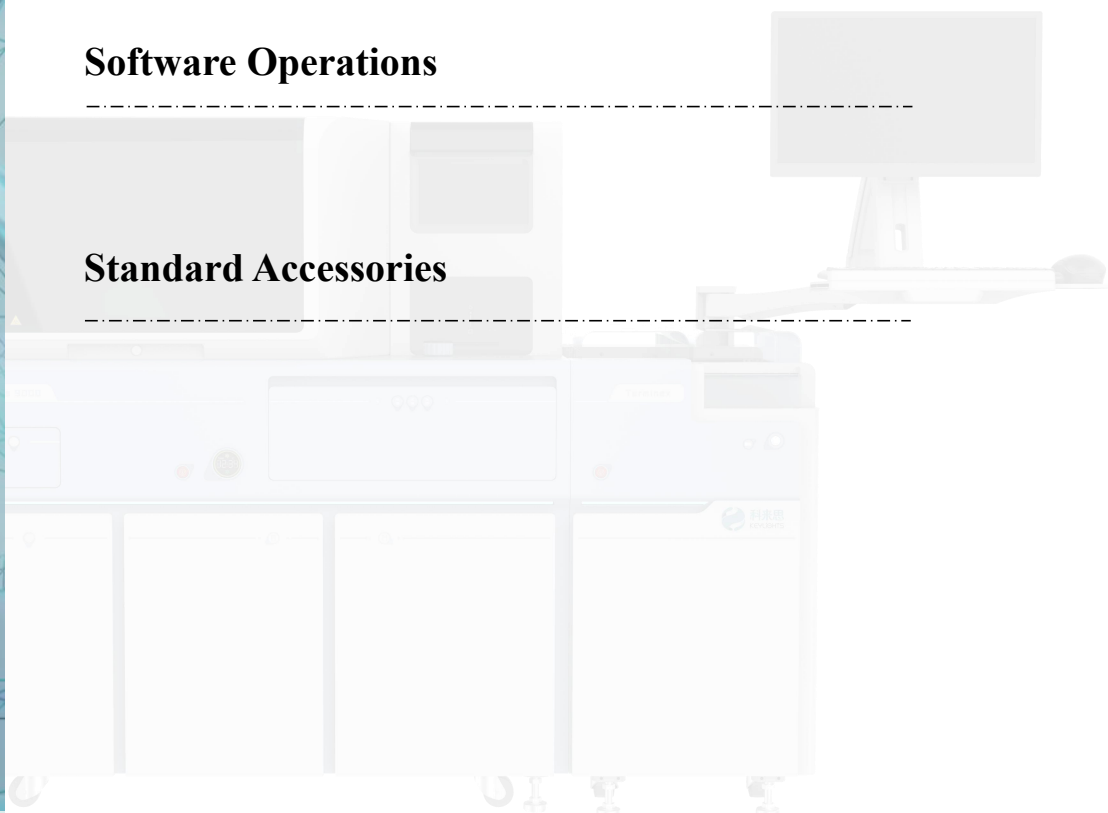
---

## **Software Operations**

---

## **Standard Accessories**

---



# Venus 9000 Ultra-fast Automatic Chemiluminescence Immunoassay Analyzer, Focus on Excellence

Registration Certificate No: 渝械注准20232220334

## Fully automated chemiluminescence immunoassay analyzer—— 900T/H

Intelligent algorithms, flexible scheduling, adaptation to all complex reaction processes, ultra-long fault-free running time, precise control of the entire detection process with  $CV \leq 3\%$ , optional tips module to prevent contamination. Modular combination of analyzer+ sample input output buffer + track, compatible with biochemical, flow cytometry, and coagulation analyzers to form the automated laboratory testing system

## Fully compatible with the AE/AP//HRP principle

Carryover  
 $<0.1\text{ppm}$

Reagent positions  
42

Sample positions  
360

Throughput

Precision

RVs

900T/H

$\leq 3\%$

2000+



# Instrument Specifications

- **Ultra-fast with compact size**

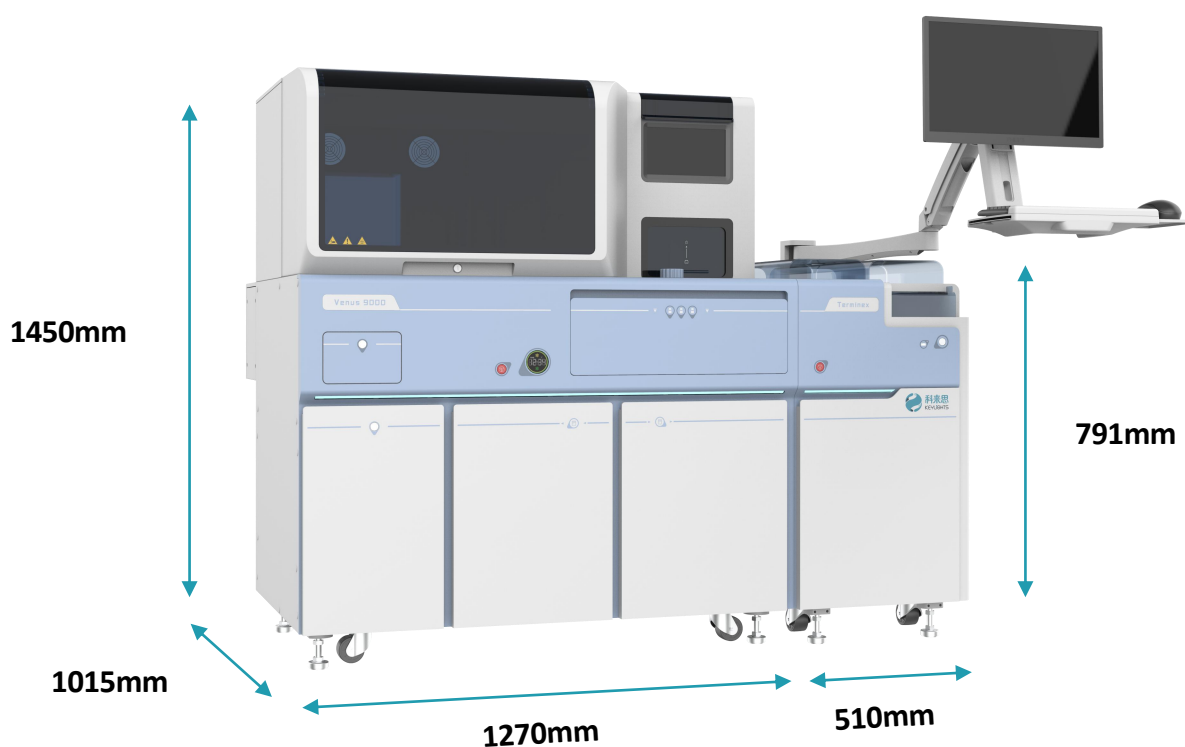
900T/H per analyzer, customizable connection with multiple analyzers, domestically exclusive

- **High reliability, deep customization**

Ultra-long fault-free running time, precise control of the entire detection process with  $CV\% \leq 3$ , optional tips module to prevent contamination. Compatible with biochemical, flow cytometry, and coagulation analyzers to form the automated laboratory testing system

## Floor efficiency ratio: 495T/H/m<sup>2</sup>

Dimensions (mm) : 1270\*1015\*1450 (Instrument) ; 510\*1015\*791 (Input Output Buffer)



# Instrument Specifications

- **Deep intelligence, full compatibility**

Intelligent algorithms, flexible scheduling, adaptability to all complex reaction processes, fully compatible with the AE/AP/HRP principles

- **Comprehensive functionality, easy operation**

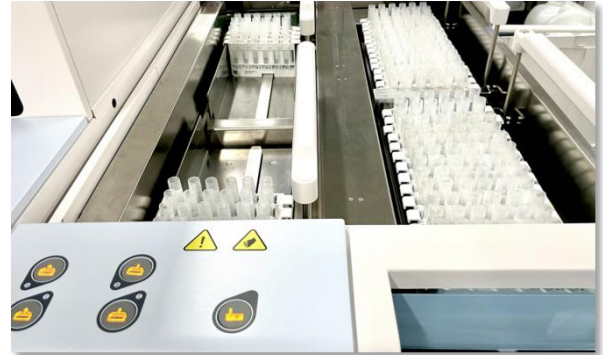
Comprehensive functionality, covering a wide range of application scenarios

3-axis linkage for free-floating main user screen + secondary user screen. 360° rotational barcode scanning, allowing barcodes to be placed arbitrarily. Real continuous reagent replacement



**Modular combination of analyzer + sample input output buffer + track**

# Functional modules



**Batch sample loading tray**

**Up to 360 sample positions, automatic continuous sample loading**



**Sample transport system**

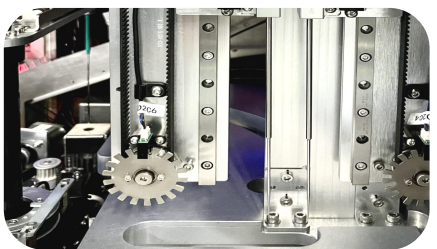
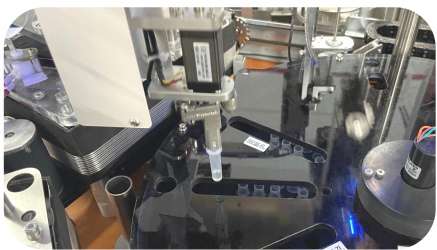
**3 tracks, high-speed transportation, sample storage  
buffer zone, no need for manual intervention**



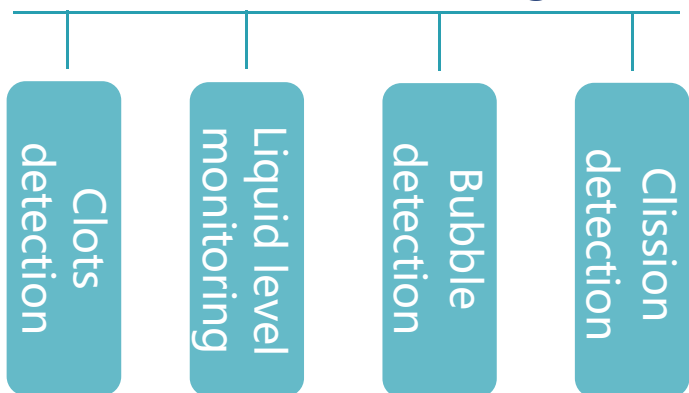
# Functional Modules



42 reagent positions, replacement at any time, continuous loading, 24-hour refrigeration at 2-8°C



Intelligent loading  
real-time monitoring

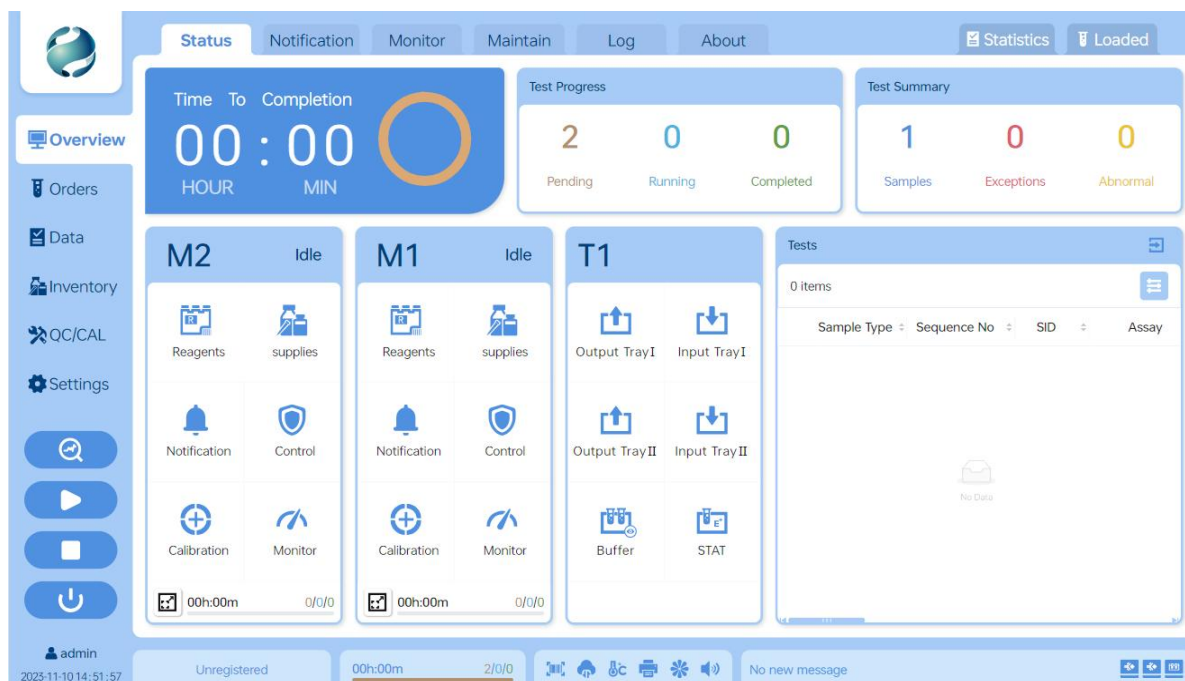


# Instrument Parameters

Series	Venus 9000
Detection Principle	Open platform, supports AE, AP, or HRP systems with magnetic particle
Throughput	900T/H
Sample Positions	360 sample positions
Reagent Positions	42 reagent positions, with refrigeration function at 2~8°C. Replacement without an interruption in system operation. Customization available.
Sampling	Optional steel probes or tips module
Walk-Away Time	> 3h
Precision	CV≤3%
Carryover	0.1ppm
Sample Loading	Batch sample loading by tray. Loading and unloading samples at any time. STAT assay at anytime
LIS	Serial port, Network port, Unidirectional, Bidirectional
Sample Containers	Standard blood collection vessel, Eppendorf tube, Hitachi cup
Input Output Buffer Dimensions	510*1015*791 (mm)
Instrument Dimensions	1270*1015*1450 (mm)



# Operation Software



## Overview

user friendly/real-time monitoring of assay tests/real-time monitoring of reagents and consumables/smart alert/ multi-language support



## Orders

Supports ordering specimen, control, and calibration tests. With smart test data statistics, automatic test classification and display which makes it easy to search, rerun and release tests

# Standard Accessories



Reagent racks



Reaction vessels



Substrate bottles



Sample racks

# Reagents

## Tumor Marker

CYFRA21-1  
NSE  
AFP  
CEA  
CA125  
SCCA  
CA15-3  
CA19-9  
CA72-4  
HE4  
PIVKA II  
ProGRP  
CA50  
CA242  
LN

## Fertility

FSH  
E2  
AMH  
PROG  
β-HCG  
TESTO  
LH  
PRL  
SHBG

## Anemia

VB12  
FA  
Ferr

## Cardiac Marker

hs-cTnI  
NT-proBNP  
BNP  
CK-MB  
MYO  
LP-PLA2  
H-FABP

## Thyroid

FT4  
FT3  
TSH  
TT3  
TT4  
TG  
TGAbs  
TPOAb

## Inflammation Monitoring

PCT  
SAA  
IL-6

## Kidney Marker

Cortisol

## Endocrine hormone

GH  
ACTH

## Stomach Marker

PG I  
PG II  
G17

## Coagulation

D-Dimer  
FDP  
PIC  
TAT  
TM  
tPAI.C

## Liver Marker

PIIINP  
CIV  
HA

## Bone Metabolism

PTH  
CT  
25-OH VD

## Glyco Metabolism

C-P  
INS

KEYLIGHTS (SHENZHEN) TECHNOLOGY.CO, LTD

CHONGQING KEYSMILE BIOLOGICAL TECHNOLOGYCO, LTD

Hotline:400-808-1186      Tel:023-63083850

Email:keylights@keylights.cn      Website:keylights@keylights.cn

